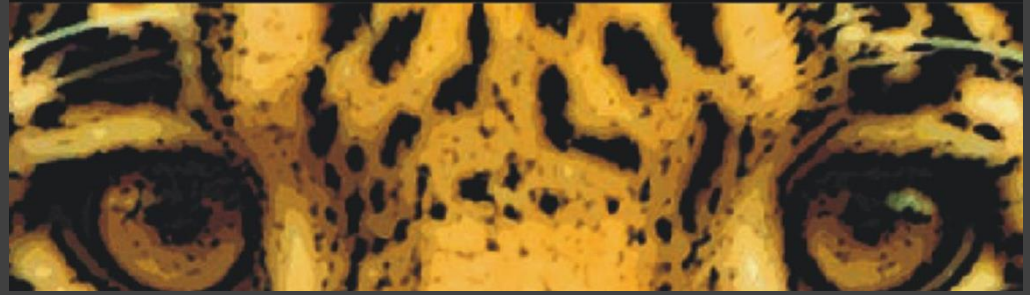




CARA
HOTELS

TRINIDAD & TOBAGO - GUYANA

wilderness
explorers





Trusthouse Forte



Shaun McGrath



Paul Stephenson

CARA HOTELS OWNERS STARTED AS MANAGERS OF THE GUYANA PEGASUS BETWEEN 1986 AND 1995



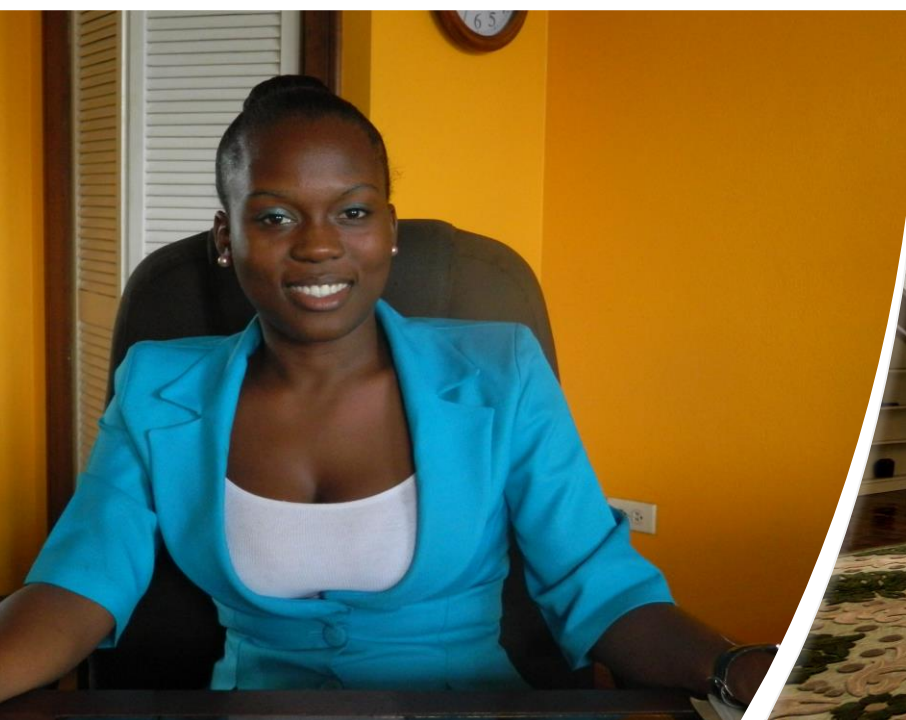
**TIMBERHEAD
RAINFOREST LODGE
1995**



**CARA
HOTELS**
TRINIDAD & TOBAGO - GUYANA

Cara Lodge Hotel
A Heritage House since 1840





DEVELOPMENT PLANS

Opening new annex to the hotel with one bedroom suites to cater for the growing demand for serviced long term self catering accommodation.

Opening in August 2021

Expansion of the existing hotel with

- An additional 40 luxury bedrooms.
- A roof top pool and gym
- Increased banqueting space
- Additional parking.

Planned opening in mid 2022



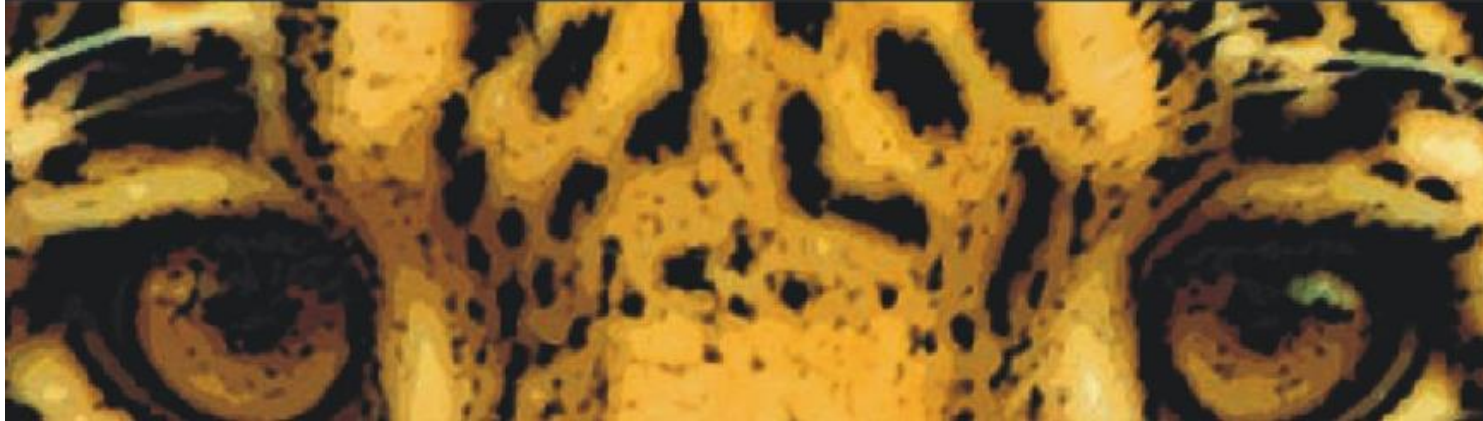


CARA HOTELS EXPANDED INTO TRINIDAD IN 2003

A wide waterfall cascading over a rocky cliff into a pool of water, surrounded by lush green forest. The water is white and frothy as it falls, creating a misty atmosphere. The surrounding area is covered in dense, vibrant green trees and vegetation. The overall scene is a natural, scenic landscape.

OPPORTUNITIES FOR TOURISM IN GUYANA

wilderness explorers



About Us

Established 1994

Guyana's only Destination Management Company

Guyana's largest Licensed Tour Operator

Largest regional DMC

We offer product in Guyana, Suriname, French Guiana and the Caribbean

Specialist in nature, adventure, community and cultural travel and experiences



What we offer



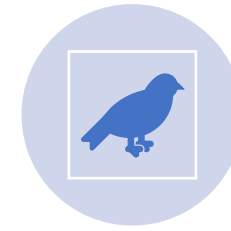
CUSTOMISED FIT'S



SCHEDULED SMALL
GROUP DEPARTURES



MULTI-DESTINATION
TRAVEL



SPECIALISED
BIRDWATCHING AND
WILDLIFE TOURS



EXPEDITIONS



FIXERS: LOGISTICAL
SUPPORT FOR FILM
PRODUCTIONS



TOURISM TRAINING



PRODUCT
DEVELOPMENT AND
SUPPORT



Unique Selling Points of Guyana

Untouched wilderness

Healthy populations of wildlife

Winner of several international awards for tourism in the last few years has brought international recognition.

Nearly 900 species of birds

Community Led and Owned Tourism

Very few tourists. In one year Guyana has less tourists than Machu Picchu has in a day

Only one north-south road and it is only sealed for the first 60 miles

Close to North America and same time zone as East coast (1 hour behind in daylight savings)

Getting to Guyana from North America

Non-stop flights with American Airlines from New York and Miami

Copa via Panama and connects all Latin America

Caribbean Airlines with non-stop and via Trinidad services from MIA, JFK and YYZ

Surinam Airways non-stop service from MIA

JetBlue with direct flights from New York

Getting to Guyana from Europe

Virgin Atlantic from London via Barbados

British Airways from London via Barbados or Trinidad

KLM from Amsterdam via Paramaribo





Atta Rainforest Lodge

The Iwokrama Canopy Walkway





Iwokrama Canopy Walkway

Suspension bridges leading to 3 platforms in the mid to upper canopy at 100 feet

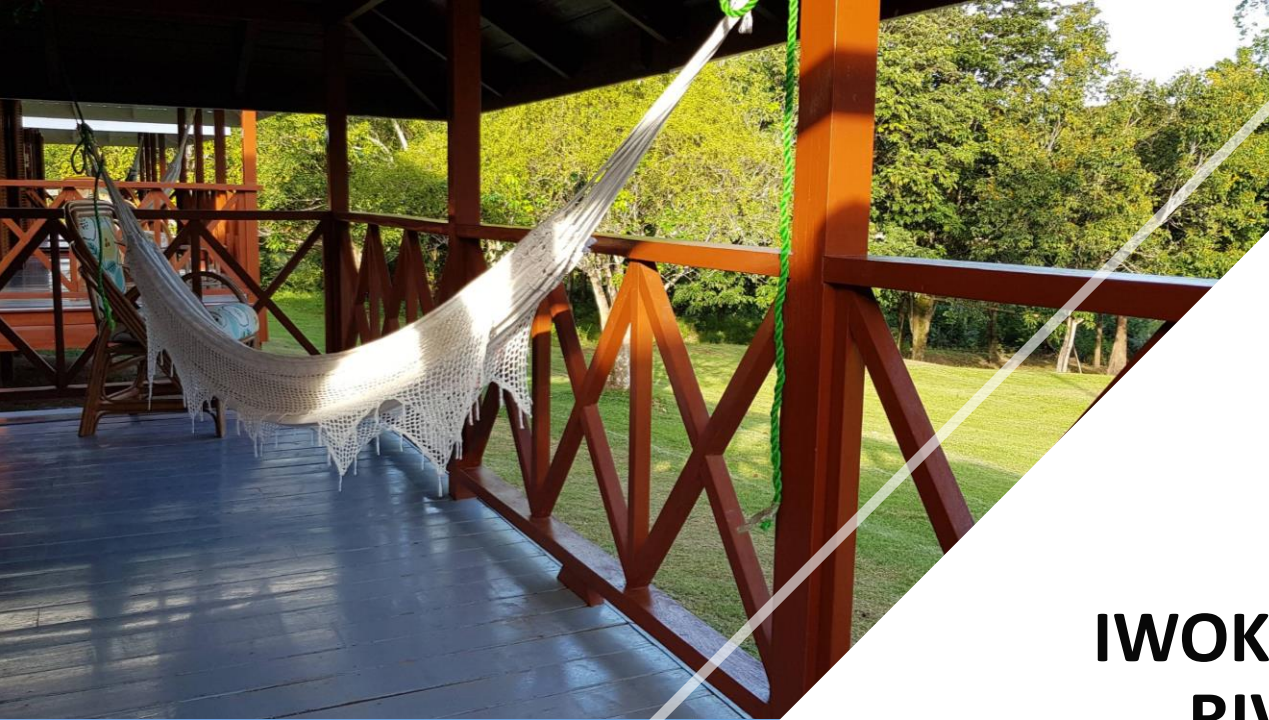




DEVELOPMENT PLANS

- Doubling the room stock by 2024
- Development of additional nature trails for walking and biking.
- Building a swimming pool and other facilities to increase average length of stay





**IWOKRAMA
RIVER
LODGE**







Community Led and Owned Tourism

SURAMA VILLAGE



ROCK VIEW LODGE





KARANAMBU LODGE

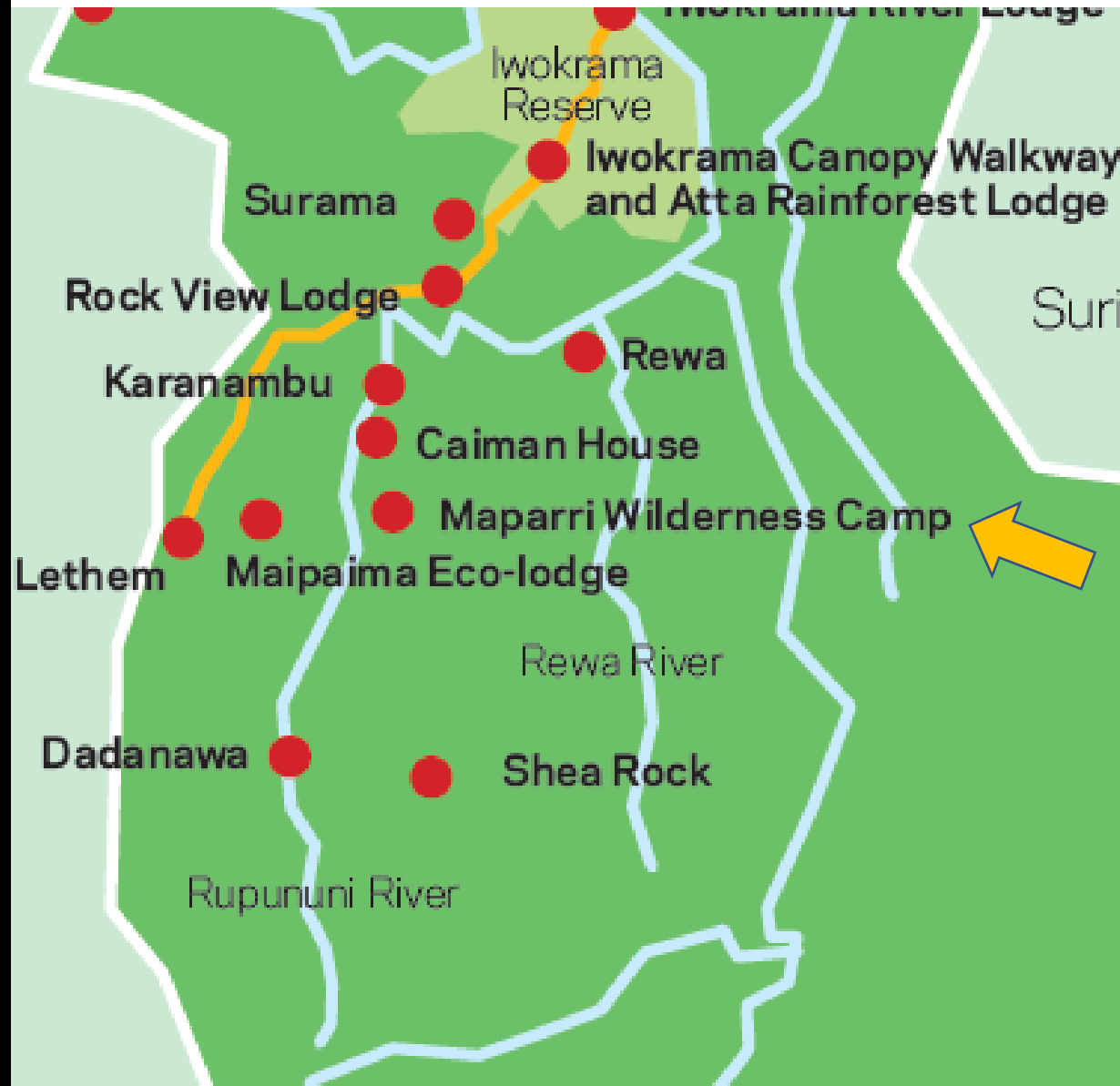


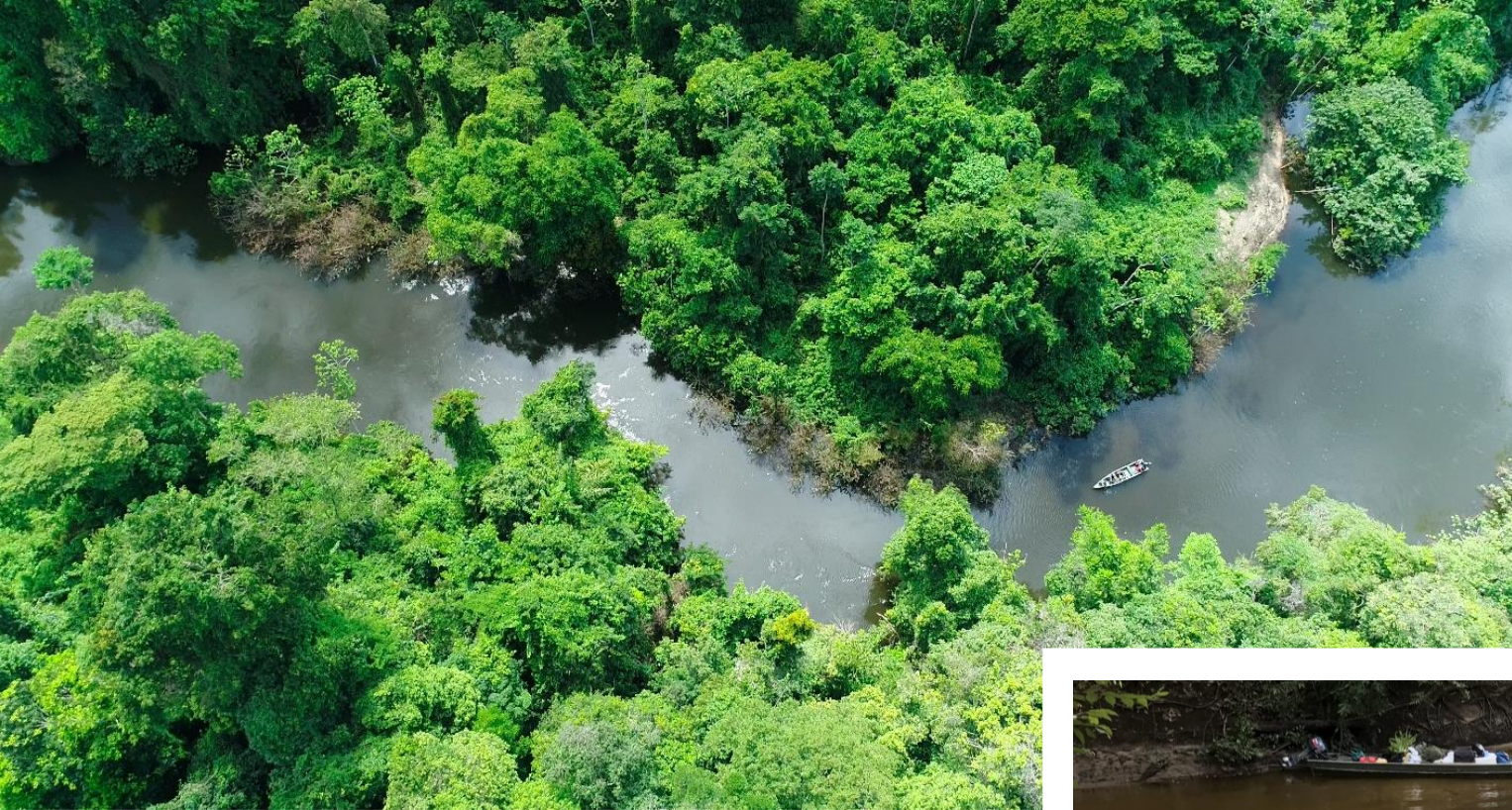
Kaieteur National Park

- Jewel in the crown of Guyana Tourism
- Longest single drop waterfall in the world
- Conditions created by the falls support a unique micro environment with some species endemic to the locale
- Ideal location for the flagship resort of Guyana.



The Kanuku Mountains and Mapari Wilderness Camp







THANK YOU